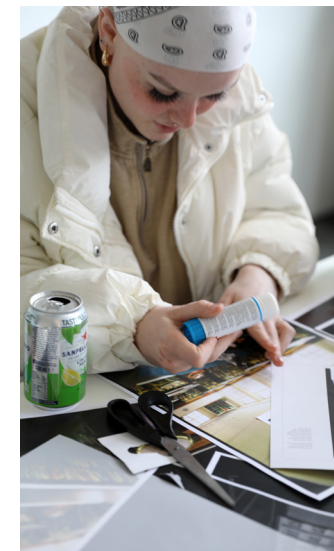
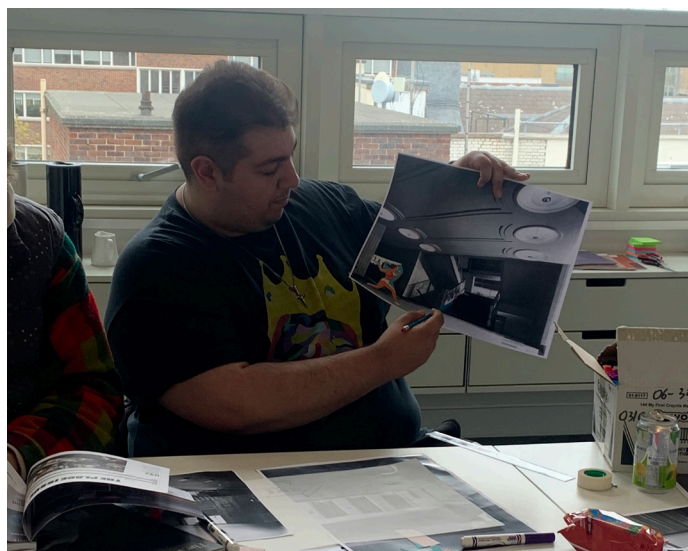
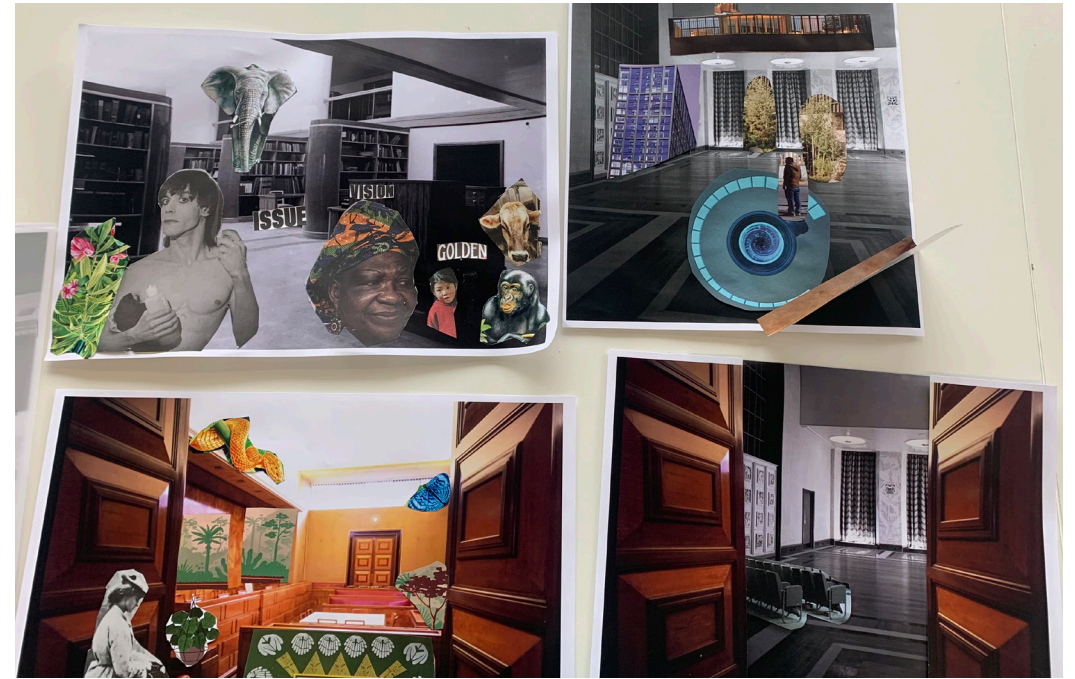


Investigating architecture through performance with Chickenshed

Three stage programme research

Stage 1: Architecture knowledge and skills building at AHMM (April)



Three stage programme research

Stage 2: RIBA HQ research gathering visit (May)



Three stage programme research

Stage 3: RIBA HQ Chickenshed performance as part of London Festival of Architecture (June)



London Festival of Architecture programme event description

Special performance with children and young people from Chickenshed
Sunday 26 June 14:00-15:00 In the Florence Hall at RIBA

Children and young people from charity and inclusive theatre company, Chickenshed, have been exploring RIBA HQ in advance of its refurbishment and created a performance using movement, music and dance. Utilising their own diverse, lived experience, they have analysed the space in order to generate responses and ideas to help ensure that the refurbished building will be welcoming and accessible to all. Join Chickenshed as they demonstrate the power of performance as a tool for consultation, illustrating the need for inclusive access to spaces. Chickenshed students have worked together with AHMM Architects and RIBA Learning to create this special performance that will be informal, lively and amazingly engaging as the performers and audience share the same space. <https://www.londonfestivalofarchitecture.org/event/special-performance-with-children-and-young-people-from-chickenshed/>

Film made by Chickenshed summarising the project https://www.youtube.com/watch?v=9olmnK8C5P-c&ab_channel=ChickenshedTheatre

About the three collaborating organisations

Chickenshed 'Theatre Changing Lives'

Chickenshed is a pioneering and inclusive company bringing together people of all ages and from all backgrounds to produce outstanding theatre that entertains, inspires, challenges and informs both audiences and participants alike. Their vision is a society that enables everyone to flourish, and Chickenshed's mission is to create entertaining and outstanding theatre that celebrates diversity and inspires positive change. They are unique in developing and celebrating the creative energy of people who would never normally meet, much less have the opportunity to work together to produce life changing theatre. programme of outreach projects working with some of the hardest to reach communities.

As well as offering over 250 performances per year, they are also an educational establishment delivering Further and Higher Education courses. working with some of the hardest to reach communities, Chickenshed truly represents 'Theatre Changing Lives'. www.chickenshed.org.uk/

RIBA Learning

RIBA Learning's programme provides exciting opportunities for everyone to explore, question and celebrate architecture. Their programme is inspired by ...their historic 1930s headquarters, 66 Portland Place. Their activities support learners of all ages and experiences in understanding how spaces ... are designed and built. By investigating architecture ...their programme encourages learners to think critically and test the boundaries of their creativity. Architecture

matters to all of us and their programme aims to make it accessible to everyone.

<https://www.architecture.com/education-cpd-and-careers/learning>

Allford Hall Monaghan Morris

AHMM education mentors contribute to learning projects, aiming to ensure that the future architecture profession represents all parts of our culture. They also support formal and informal learning programmes promoting understanding of how architecture informs the world around us. They work with all ages from pre-school children to older people, often using their own buildings as resources for groups to explore. As well as organising their own educational activities, their education mentors participate in external programmes such as Open City's Accelerate, and Architecture in Schools, RIBA's Architecture Ambassadors and Design West's Shape My City in Bristol. www.ahmm.co.uk

Team

Nine young consultants from Chickenshed
Claire Pollock, Partnerships Lead, AHMM
Julie Wood, Managing Director, Chickenshed
Lizi Cushen, Associate and Employee Ownership Director, AHMM
Louise Perry, Partnership Fundraising Manager Chickenshed
Patricia Ribeiro, Associate Director, AHMM
Simon Allford, Chickenshed Trustee, RIBA President, AHMM Founder
Sophie Draper, Head of Learning, RIBA